



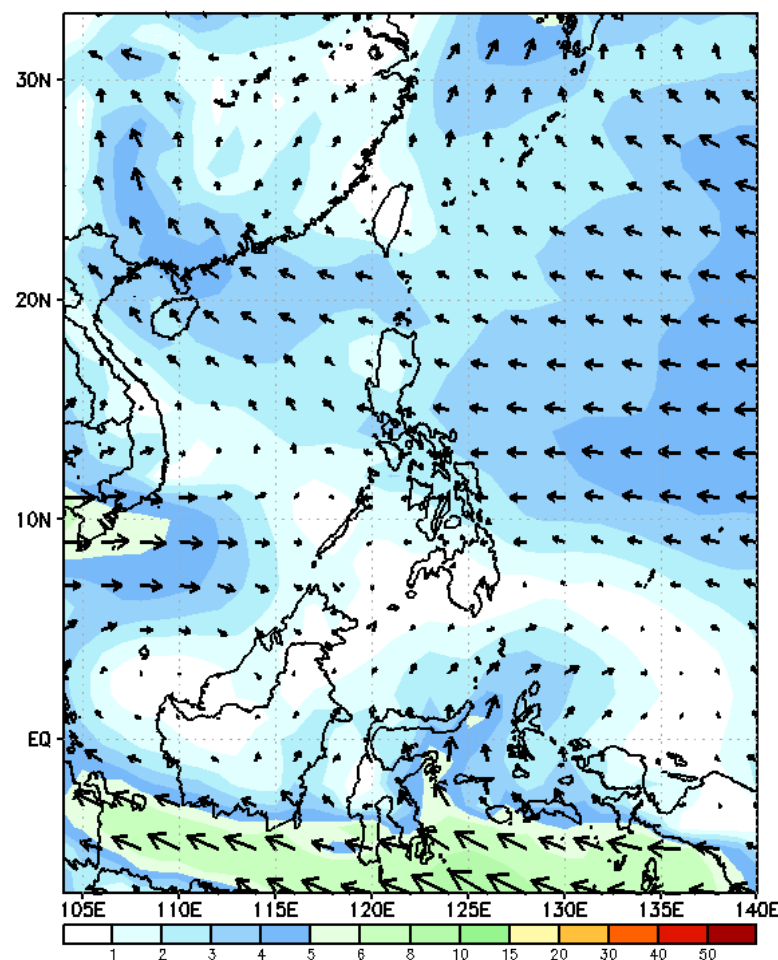
Week 1 & Week 2 Forecast for the Philippines using GEFS Model



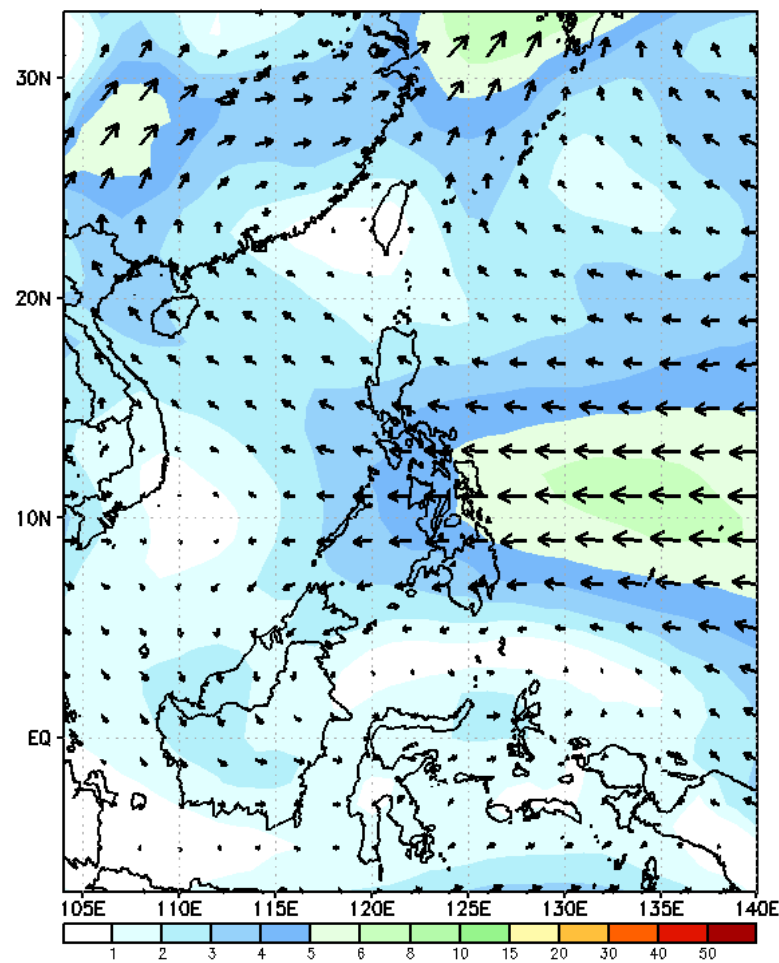
GEFS Week-1 Forecasts: Wind Forecast

Week 1: Sep 15-21, 2023

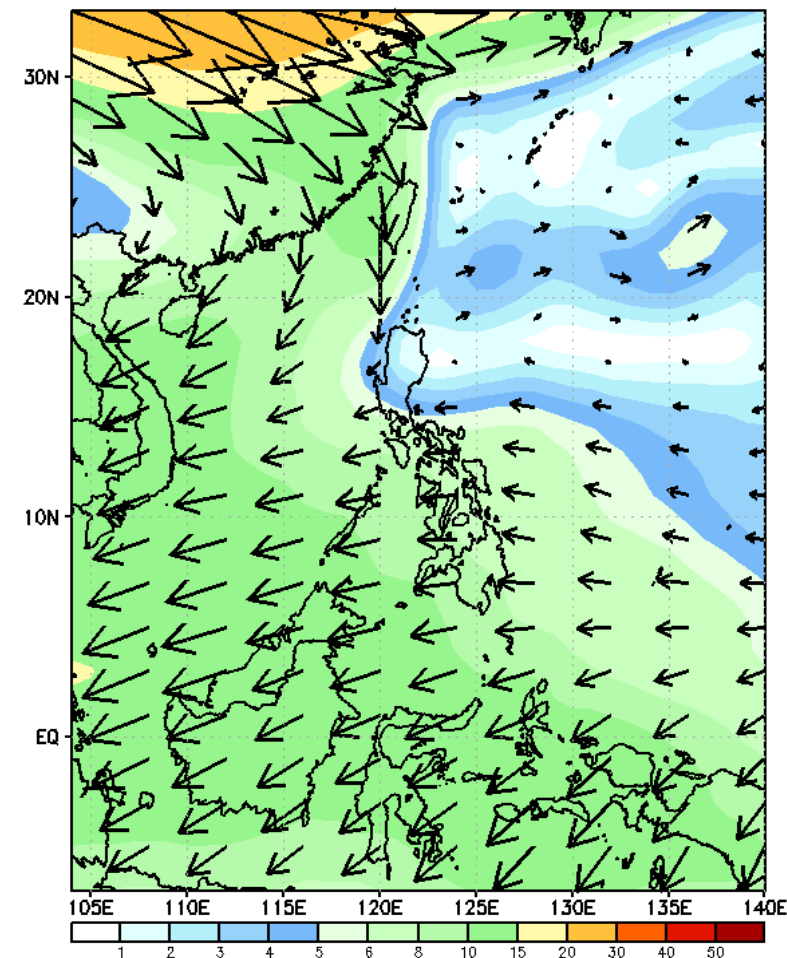
GEFS Week-1 850-hPa Wind Total
Valid: 20230915 - 20230921



GEFS Week-1 700-hPa Wind Total
Valid: 20230915 - 20230921

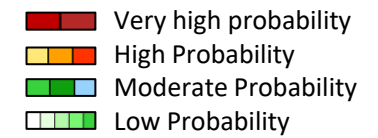


GEFS Week-1 200-hPa Wind Total
Valid: 20230915 - 20230921



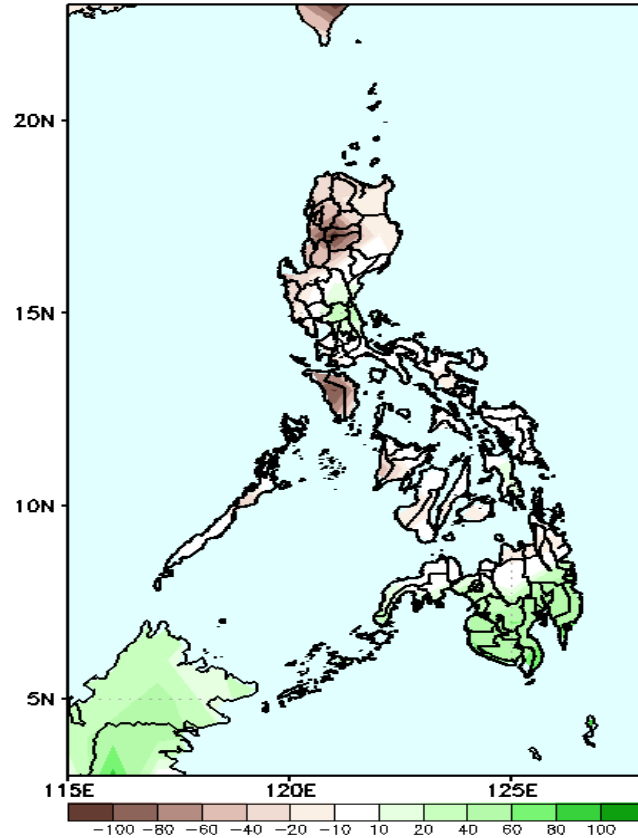
Weak Southwest Monsoon is forecasted to affect the western sections of Luzon. Easterlies affecting the rest of the country.

Precipitation Anomaly and Exceedance Probability > 25/50 mm

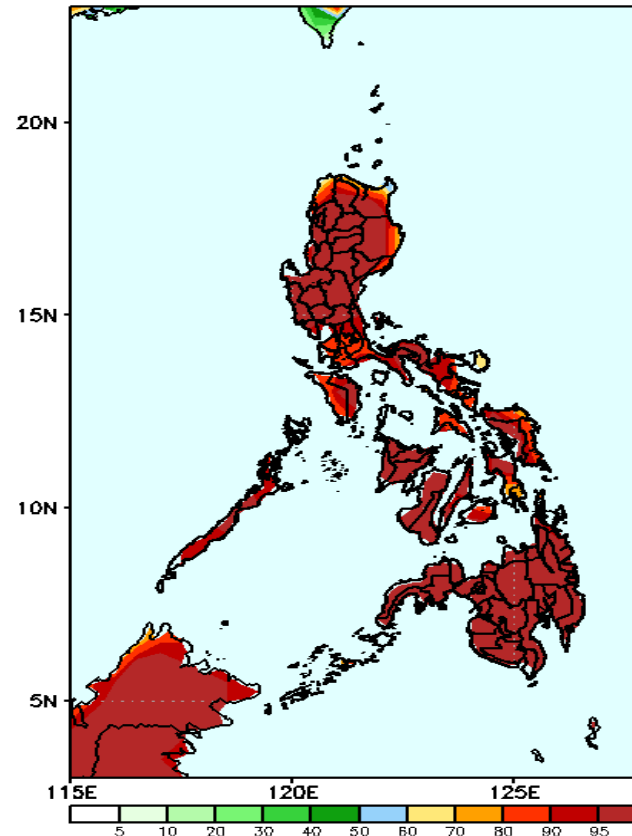


Week 1: Sep 15-21, 2023

GEFS Week-1 Precip Anomaly
Valid: 20230915 - 20230921



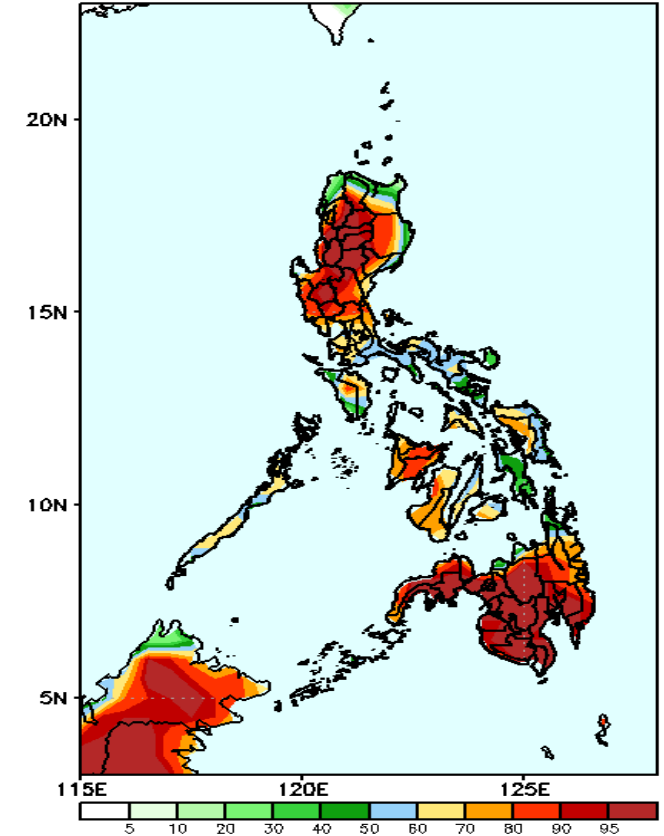
GEFS Week-1 Exceedance Prob. > 25mm
Valid: 20230915 - 20230921



Probability to Exceed 25mm

- High to very high across the country.

GEFS Week-1 Exceedance Prob. > 50mm
Valid: 20230915 - 20230921

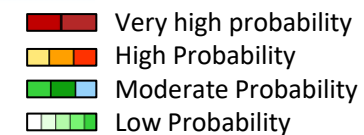


Probability to Exceed 50mm

- High to very high in most parts of Northern and Central Luzon, Western Visayas, and Mindanao.
- Moderate to high over the rest of the country.

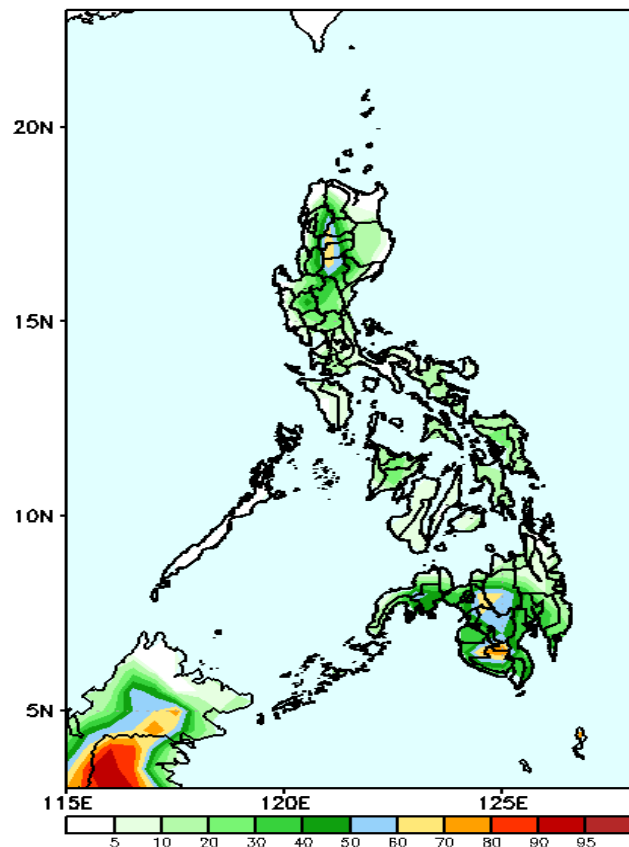
Rainfall deficit of 40-90mm in Ilocos Region, CAR and Mindoro; 10-40mm for the rest of Luzon and Panay Island while 40-90mm increase of rainfall is expected in Lanao provinces and southern Mindanao.

Exceedance Probability > 100/150/200 mm



Week 1: Week 1: Sep 15-21, 2023

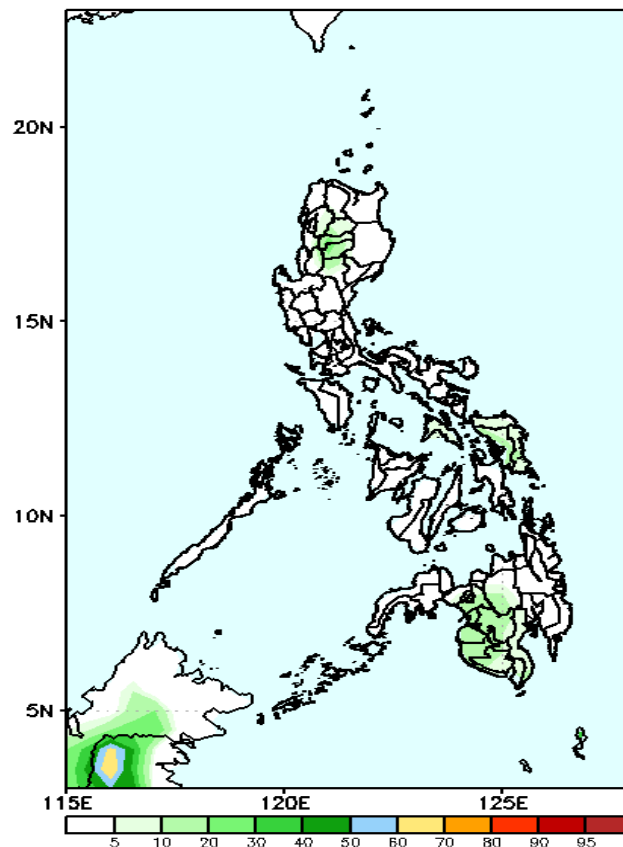
GEFS Week-1 Exceedance Prob. > 100mm
Valid: 20230915 - 20230921



Probability to Exceed 100mm

- Moderate to high over Kalinga, Mountain Province, Ifugao, SOCCSKSARGEN, Bukidnon, Lanao Provinces, Zamboanga del Sur;
- Low over the rest of the country.

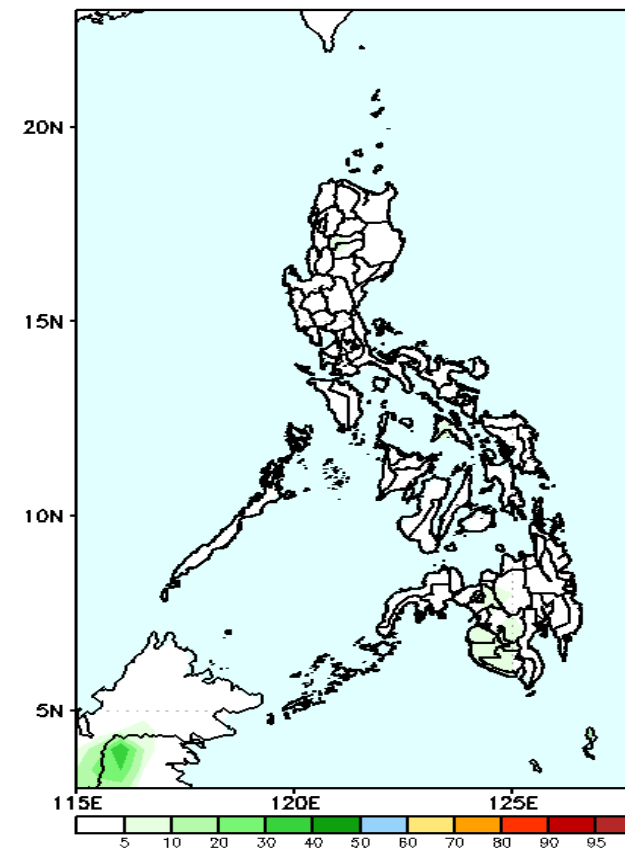
GEFS Week-1 Exceedance Prob. > 150mm
Valid: 20230915 - 20230921



Probability to Exceed 150mm

- Low in most parts of the country.

GEFS Week-1 Exceedance Prob. > 200mm
Valid: 20230915 - 20230921



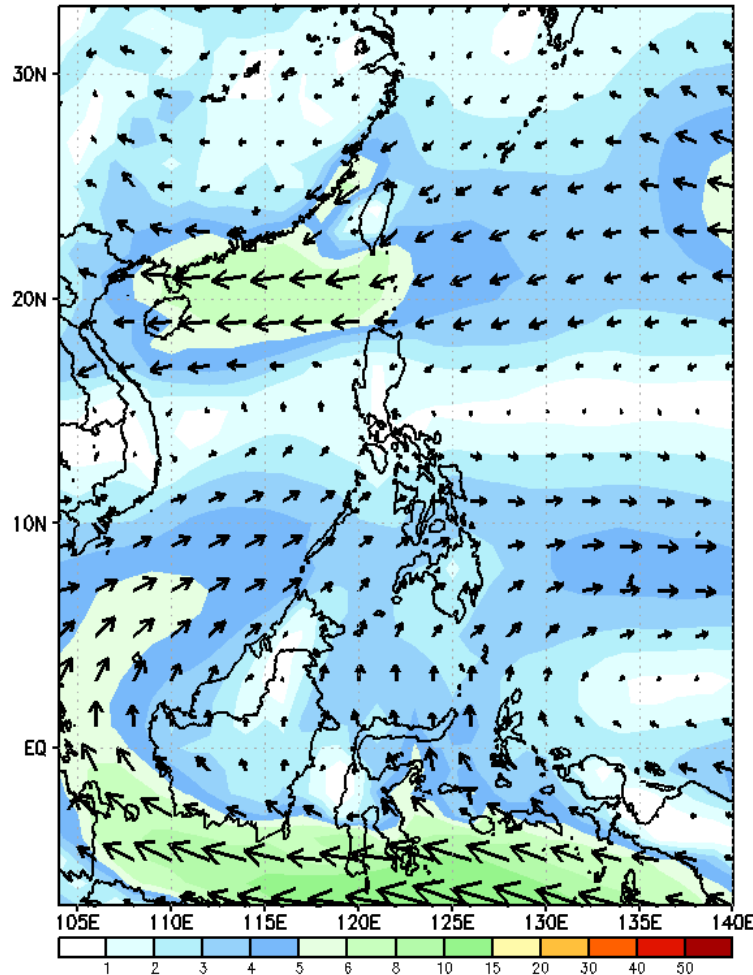
Probability to Exceed 200mm

- Low in most parts of the country.

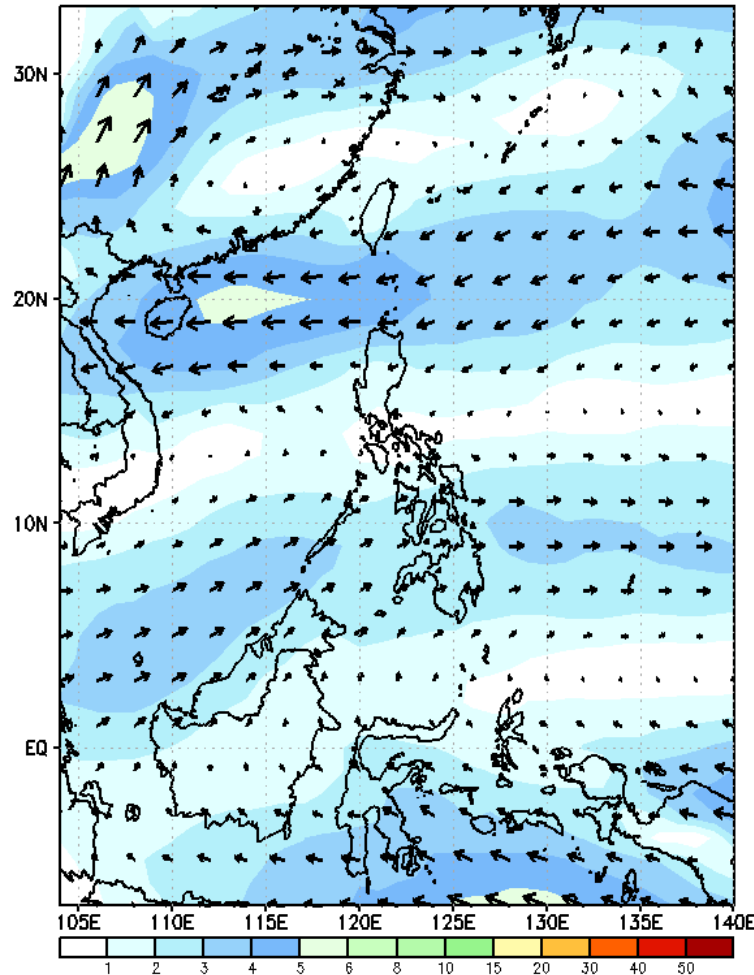
GEFS Week-2 Forecasts: Wind Forecast

Week 2: Sep 22-28, 2023

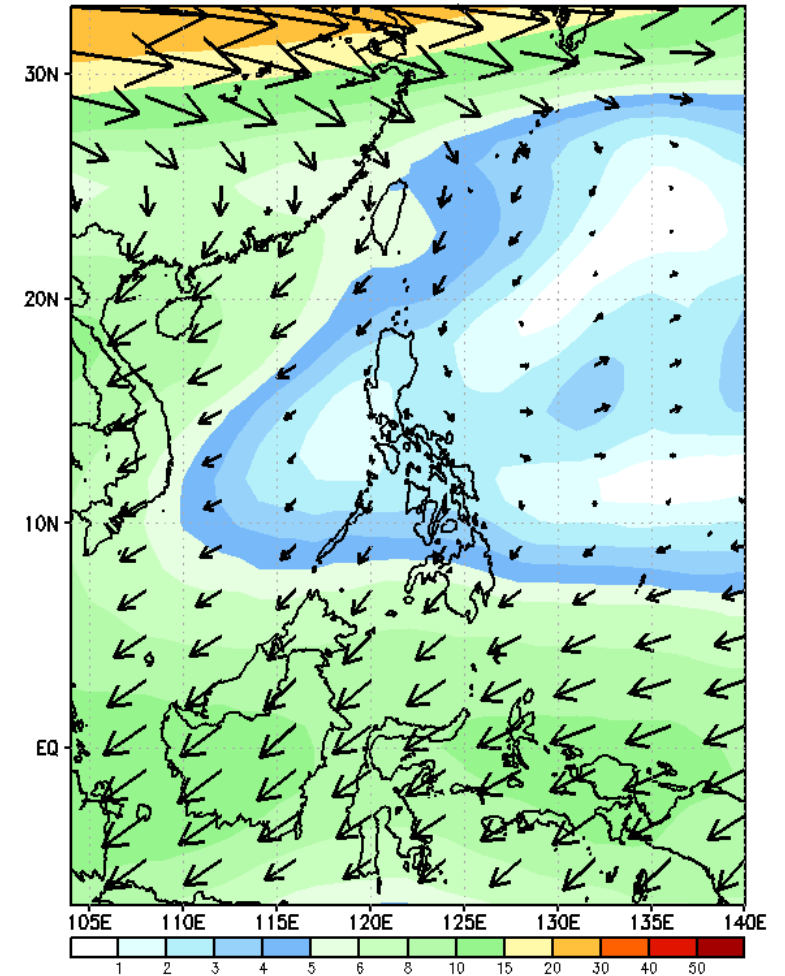
GEFS Week-2 850-hPa Wind Total
Valid: 20230922 - 20230928



GEFS Week-2 700-hPa Wind Total
Valid: 20230922 - 20230928

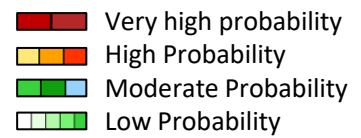


GEFS Week-2 200-hPa Wind Total
Valid: 20230922 - 20230928



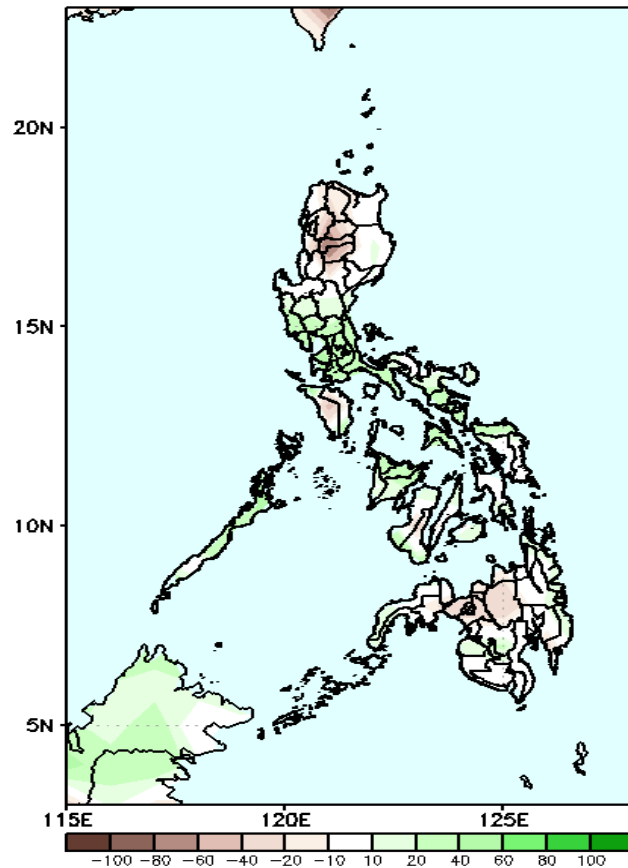
Weak Southwest Monsoon is forecasted to affect some areas in Western Luzon and Western Visayas. Easterlies affecting the rest of the country.

Precipitation Anomaly and Exceedance Probability > 25/50 mm



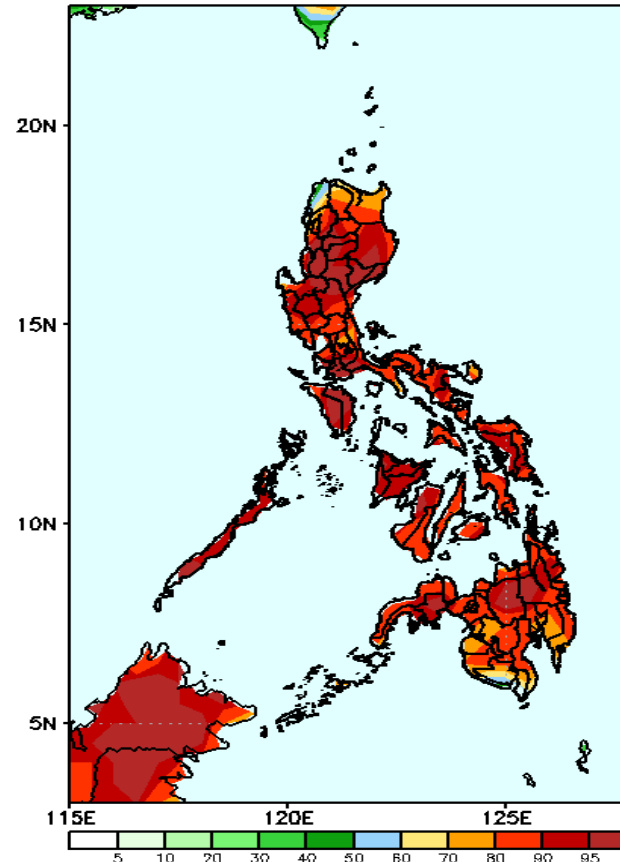
Week 2: Sep 22-28, 2023

GEFS Week-2 Precip Anomaly
Valid: 20230922 - 20230928



Rainfall deficit of 20-60mm is expected in CAR, Mindoro, Lanao provinces and Bukidnon while 20-70mm increase of rainfall in central and southern Luzon and most of Visayas.

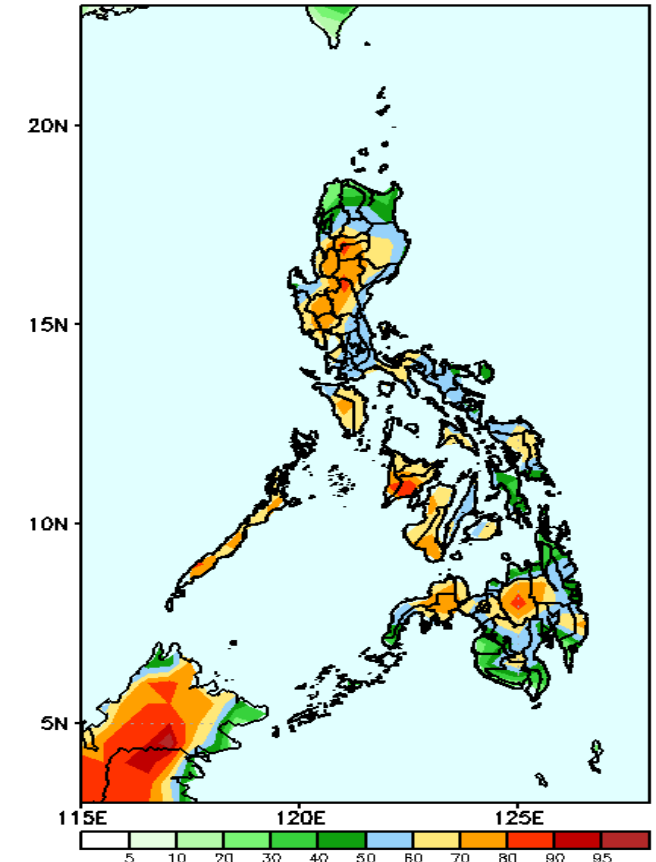
GEFS Week-2 Exceedance Prob. > 25mm
Valid: 20230922 - 20230928



Probability to Exceed 25mm

- High to very high in most parts of the country;
- Moderate to high over the extreme northern Luzon.

GEFS Week-2 Exceedance Prob. > 50mm
Valid: 20230922 - 20230928



Probability to Exceed 50mm

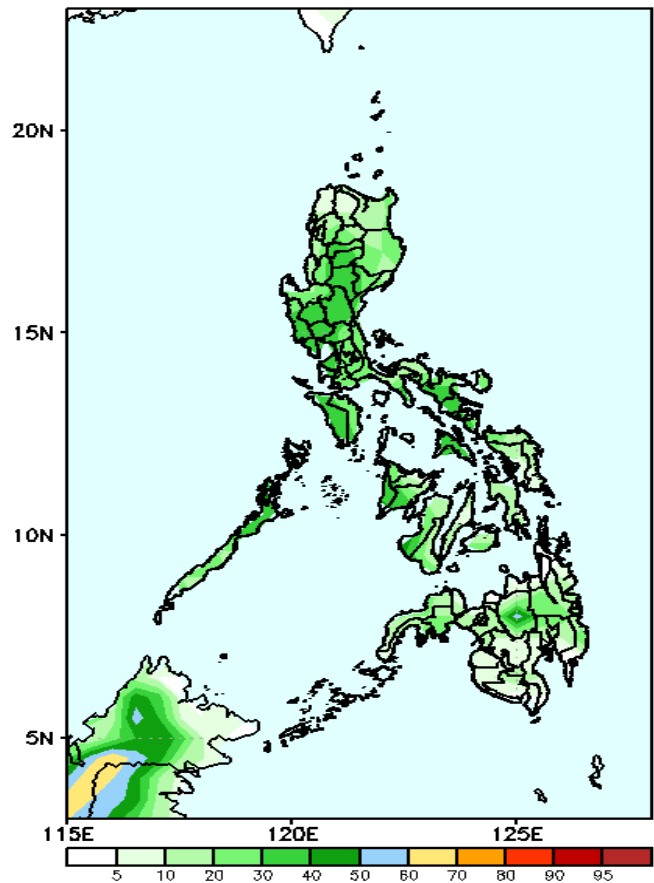
- Moderate to High across the country.

Exceedance Probability > 100/150/200 mm

Week 2: Sep 22-28, 2023

- Very high probability
- High Probability
- Moderate Probability
- Low Probability

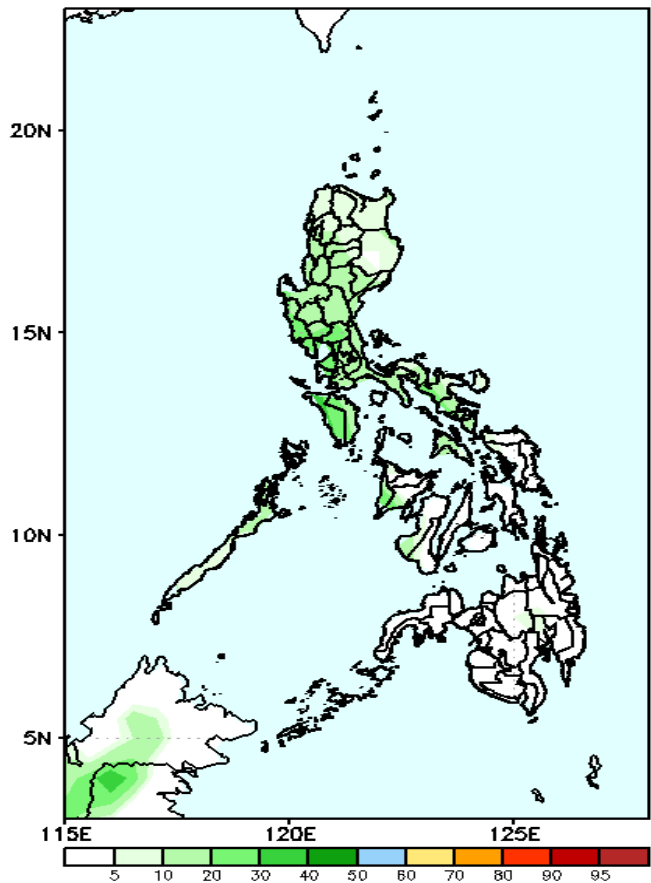
GEFS Week-2 Exceedance Prob. > 100mm
Valid: 20230922 - 20230928



Probability to Exceed 100mm

- Low in most parts of the country.

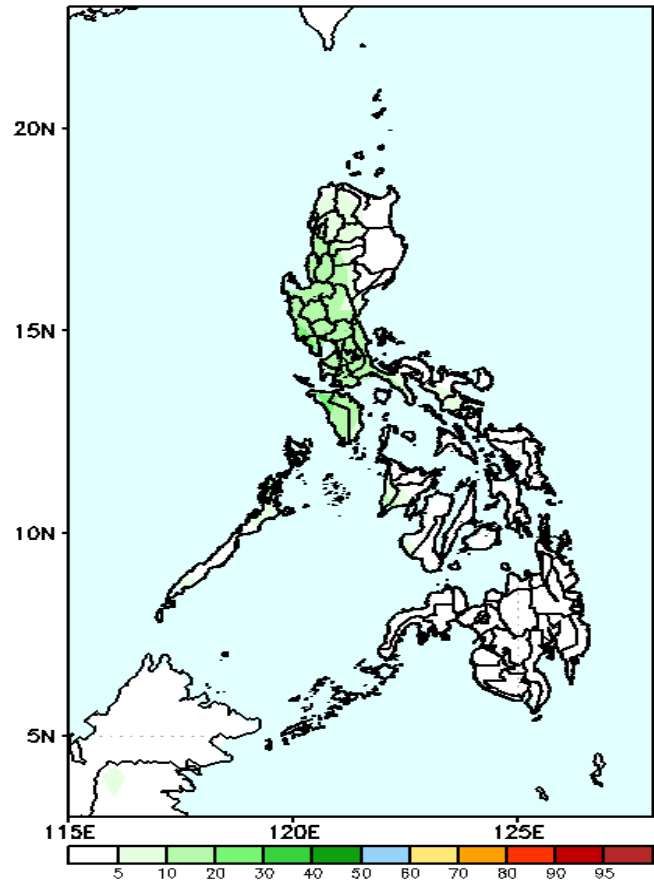
GEFS Week-2 Exceedance Prob. > 150mm
Valid: 20230922 - 20230928



Probability to Exceed 150mm

- Low in most parts of the country.

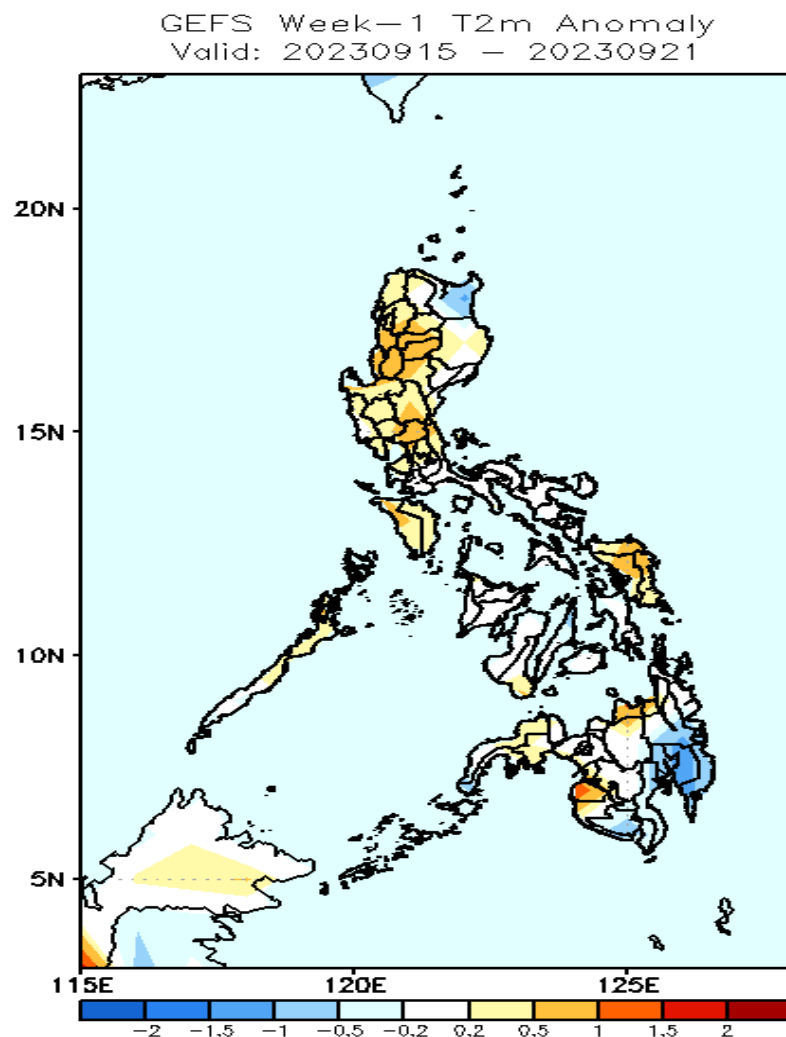
GEFS Week-2 Exceedance Prob. > 200mm
Valid: 20230922 - 20230928



Probability to Exceed 200mm

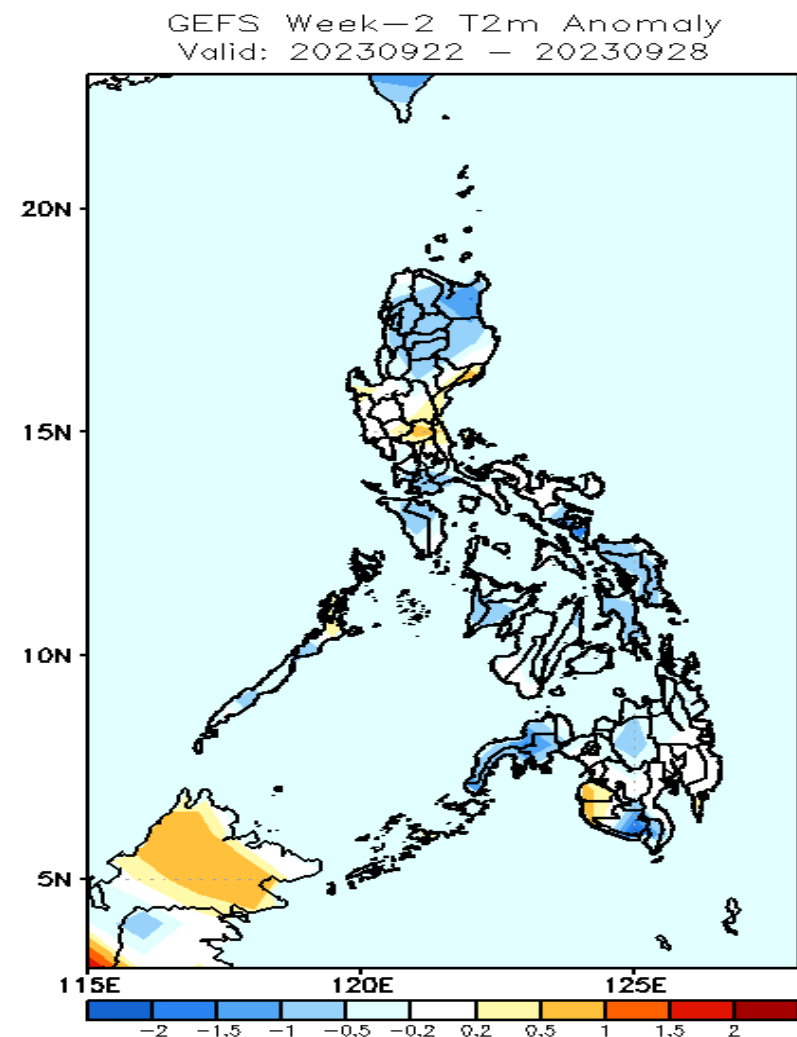
- Low in most parts of the country.

GEFS Week-1 & 2 Forecasts: T2m Anomaly



2m Temperature Week 1: Sep 15-21, 2023

Average to warmer than average surface air temperature will likely experience in most parts of the country except in Cagayan, and Davao Region where slightly cooler to cooler than average temperature is expected.



2m Temperature Week 2: Sep 22-28, 2023

Average to cooler than average surface air temperature will likely be experience in most parts of the country except in Aurora, Nueva Ecija and western part of Maguindanao and Sultan Kudarat where slightly warmer than average temperature is expected.